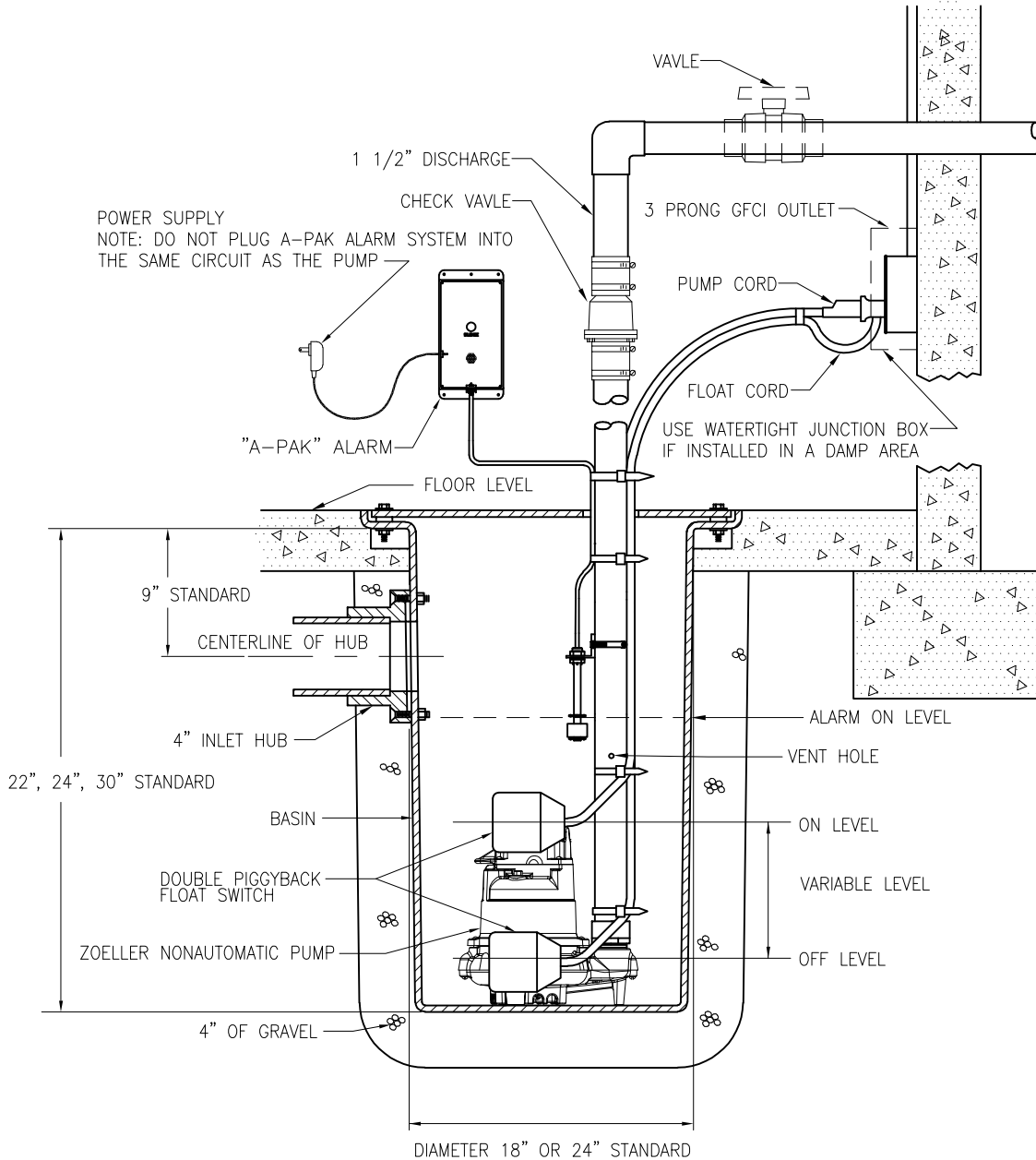



DRAWING REVISIONS				
LTR	BY	DATE	ECO #	DESCRIPTION
△	PAB	08/28/17		CHANGE TO "A-PAK"



THE INFORMATION ON THESE DRAWINGS OR WEB PAGES IS MADE AVAILABLE FOR YOUR USE. HOWEVER, YOU USE THE INFORMATION AT YOUR OWN RISK. WE BELIEVE THE INFORMATION TO BE CORRECT AND ACCURATE AT THE TIME OF ISSUE. ZOELLER COMPANY ASSUMES NO LIABILITY, EXPRESSED OR IMPLIED, RESULTING FROM YOUR ACCESSING AND USING THIS INFORMATION. DUE TO CHANGES AND/OR DOWNLOAD PROBLEMS, IT IS YOUR RESPONSIBILITY AND YOU AGREE TO BE SOLELY RESPONSIBLE TO VERIFY THAT THE INFORMATION IS CORRECT AND ACCURATE FOR YOUR PURPOSES.

DRAWING DESCRIPTION: INST. INSTR. SIMPLEX SYSTEM WITH DOUBLE VARIABLE LEVEL F.S.	NUMBERS ENCLOSED IN A CIRCLE: ① , ARE CRITICAL TO QUALITY (CTQ) ITEMS. THIS INDICATES A CRUCIAL SPECIFICATION THAT MUST BE ROUTINELY VERIFIED.				
	ITEMS MARKED (CTQ) ARE CONTROLLED BY A SEPARATE DIVISION'S QUALITY SYSTEM.				
TOLERANCES: .X ±.1 .XX ±.03 .XXX ±.010	.XXXX±.0005 ANGLES ± 1' FRACTIONS ± 1/64	CHK: DATE:	ELECTRONIC SCALE: NONE DO NOT SCALE PRINT	PART NUMBER: ~	PART REVISION: ~
DRAFTER: D.GILBERT	DATE: 8/23/91	APP: DATE:	EXCEPT AS NOTED DIMENSIONS ARE IN INCHES.	DRAWING NUMBER: SK454	
			SHEET: 1 OF 1		